

Presbyterian Church in Ireland

# Balmoral Show 2022



## Welcome to the Balmoral Show!

**‘We’re all in this together’ is a statement used throughout the pandemic by huge global brands and multi-millionaire celebrities. It suggests that this pandemic has been experienced equally around the world. However, the impact of this pandemic on a global brand, an African subsistence farmer, a millionaire celebrity and a farmer on the island of Ireland is totally different.**

There can be a sense of reassurance when we face a crisis together and know that others are in the same boat as ourselves, but even that doesn’t rescue us or provide any real hope.

What we need is the help of someone who is in control of every crisis, who joins us in the crisis and travels through with us even if he doesn’t rescue us from it.

There is a famous story in the gospels when Jesus’ disciples were travelling across the Sea of Galilee. A furious squall came up, and the waves broke over the boat, so that it was nearly swamped. Jesus was in the stern, sleeping on a cushion. The disciples woke him and said to him, “Teacher, don’t you care if we drown?”

Perhaps that is a prayer some have prayed in the past two years, “Lord, don’t you care if we drown; if we go under?” Jesus didn’t get up and say, “We’re all in this together, lads! I’ll lend another pair of hands and see if we can row back to land.”

Rather, he got up, rebuked the wind and said to the waves, “Quiet! Be still!” Then the wind died down and it was completely calm.

What assurance to have someone in the boat with us who is in control of every crisis, who joins us in the crisis and travels through it with us. Of course, he doesn’t always rescue us every time because he is more concerned to rescue us from the greatest crisis, and that is facing God’s judgment because of our sin.

Jesus entered right into all the crises of this world and shared them with us. But he also went to the cross to take the cause of all human crises on himself, that is our sin. He rose again having defeated death itself to give us hope of life in all its fullness.

Whatever crisis we are facing, it is always better to have Jesus in the boat with us, knowing that he can rescue us from it, and even if he doesn’t, there is no crisis in all creation that can ever separate us from the love of God that is in Christ Jesus (Romans 8:39).

He said to his disciples, “Why are you so afraid? Do you still have no faith?” And he asks us the same question. He invites us to place our total faith in him and when we do that there is no need to fear, for he is in the boat with us and whatever happens, he will never leave us.

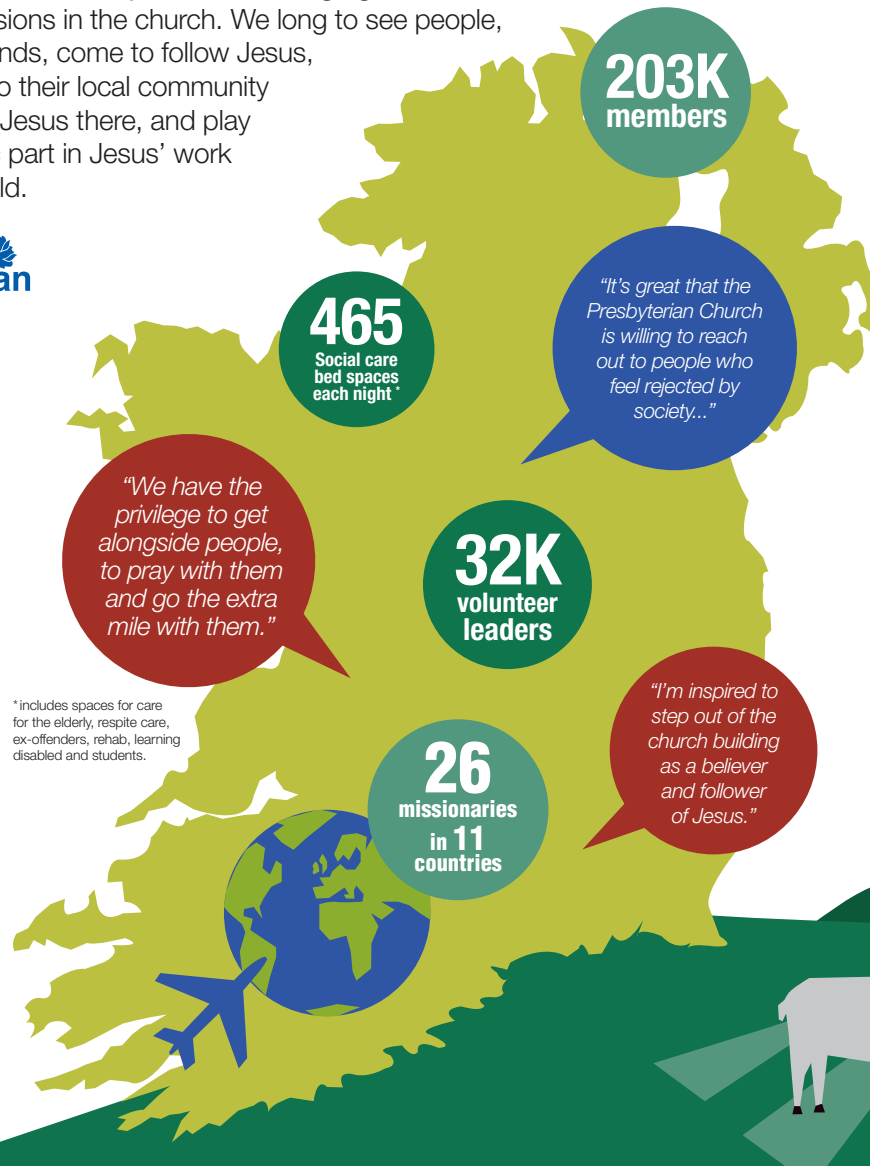


## Looking for a church?

There are 545 Presbyterian congregations, north and south.

### Who we are:

The name Presbyterian comes from the Greek word for elder. Elders are elected by each local congregation to make important decisions in the church. We long to see people, of all backgrounds, come to follow Jesus, be a blessing to their local community as they live for Jesus there, and play an enthusiastic part in Jesus' work across the world.



## Supporting farming families

The Presbyterian Church in Ireland wants to reassure all farmers and their families of our ongoing pastoral and prayerful support. We are aware that farming families face many challenges: outside pressures such as Brexit and TB, or needs closer to home such as loneliness, isolation and financial stress.

This leaflet is produced by the Presbyterian Church in Ireland with the prayerful desire that it would signpost farming families and the wider rural community to help that is available.

### Rural chaplain



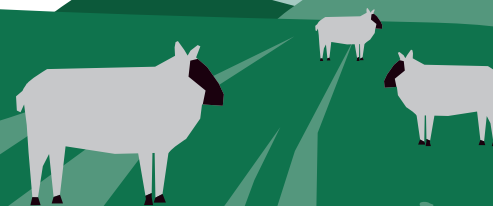
Rev Kenny Hanna is the first rural chaplain appointed by the Presbyterian Church working throughout the farming communities of counties Armagh and Down to listen to and support farming families through the ups and downs of rural life. He can be found on Facebook or Instagram. Search for rural chaplain Kenny Hanna.

Alternatively e-mail [ruralchaplain@presbyterianireland.org](mailto:ruralchaplain@presbyterianireland.org) or call on +44 (0)7938 488372

### Good news for the countryside

Look out for our fortnightly column in the *News Letter's Farming Life*. It is written by Presbyterians from a farming background or who have a heart for the countryside.

## Farming Life



## There are a number of places you can go for help and support when times are hard

Firstly, it's good to talk. We would encourage you to talk through how you feel with another member of your family, maybe a close and trusted friend, or your doctor.

Your **local minister** will always be ready and willing to listen in confidence and offer prayerful support and friendship.

A directory of ministers in the Presbyterian Church in Ireland is available at [www.presbyterianireland.org/findachurch](http://www.presbyterianireland.org/findachurch)

### Other agencies which offer help and support:

#### Rural Support

A wide range of services are offered to farm families including a helpline, signposting to services, a team of mentors and volunteers with expertise in agri-business and finance. Programmes include:



- **Across the Hedgerow** – in conjunction with the Young Farmers' Clubs of Ulster. Through telephone calls, providing older, vulnerable and more isolated farmers with a listening ear from someone who cares.

- **Life Beyond** – in collaboration with Embrace FARM, providing emotional and management support for farming families who have experienced loss through farm accident or bereavement.



- **Rural Health Forum** – a strong team with wide-ranging skills aimed at addressing the root causes of stressors for farmers and farming families.

- **Plough On** – aimed at supporting and rejuvenating older members of the farming community, through get-togethers and outings.

**T.** 0800 138 1678

**W.** [www.ruralsupport.org.uk](http://www.ruralsupport.org.uk)

#### Ulster Farmers' Union

The largest organisation representing farmers and growers in NI.



- **Land Mobility Scheme** – to help both aspiring young farmers get a foothold in the industry and life-long farmers to take a step back.
- **Life Beyond** – a charity being promoted by the current UFU president, Victor Chestnutt. Life Beyond will work in collaboration with Embrace FARM, providing emotional and management support for farming families who have experienced loss through farm accident or bereavement. Life Beyond will be officially launched at this year's Show and donations can be made on the UFU or Rural Support stands.

**T.** +44 (0)28 9037 0222

**W.** [www.ufuni.org](http://www.ufuni.org)

#### Young Farmers' Clubs of Ulster (YFCU)



- **YF SEES YOU** – the message to YFCU members: you are not on your own, you are part of something bigger, there is support for you. YFCU members have participated in a social media takeover day, talking about mental health issues. The campaign continues, with monthly video catch-ups. While Rory Best, patron of YFCU, has recorded a very helpful video, in which he talks about his own mental wellbeing needs.
- **Mental Health Mentors** – the aim is to identify two members for each county in NI who have strong mental health resilience themselves and train them so that they can support their peers. Hopefully young people will find it easier to open up to one of their contemporaries, than someone a generation older.

- **Across the Hedgerow** – see *Rural Support*

**T.** +44 (0)28 9037 0713

**W.** [www.facebook.com/yfcu.org](http://www.facebook.com/yfcu.org)

#### Health and Safety Executive Northern Ireland (HSENI)

Working to make our farms safer places.

**T.** 0800 0320 121



## One woman's story

**Sharon Smyth – trading as SME Smyth Business and Financial Consultant, Ardstraw, Co Tyrone.**

### **How are you involved in the agricultural sector?**

I was born onto a farm at Creeduff, Killen, Castlederg. I always had a love for farming and continue to live in the heart of a rural community. As a former banking relationship manager for 35 years, I was involved in credit management for farmers and others.

When I took early retirement in 2013, I became a mentor for Countryside Rural Agri and then a business mentor for Rural Support, some eight years ago. This involves me working closely with farmers and farm families.

I have also just completed a six-year term as a non-executive director on the board of Agri-Food and Biosciences Institute (AFBI).

### **What difference does following Jesus make to your daily life?**

My family ensured I knew from early on that I needed to trust in Jesus to forgive my sins and I knew I needed the assurance of salvation. I became a Christian at the age of 10. I lost my mum when I was just five and my dad when I was 15 and also my older brother. The Lord has carried me through these difficult times and he has blessed me with a wonderful husband, family, godly friends and doing work I love.

Jesus is the reason I do what I do. Jesus is everything to me. I long to honour and obey him. I want to help others and show Jesus' love to them through my daily actions.



Assembly Buildings, 2-10 Fisherwick Place, Belfast BT1 6DW  
Tel: +44 (0)28 9032 2284 Email: [info@presbyterianireland.org](mailto:info@presbyterianireland.org)  
[www.presbyterianireland.org](http://www.presbyterianireland.org)

Registered Charity in Northern Ireland (NIC104483)  
Registered Charity in the Republic of Ireland (20015695)